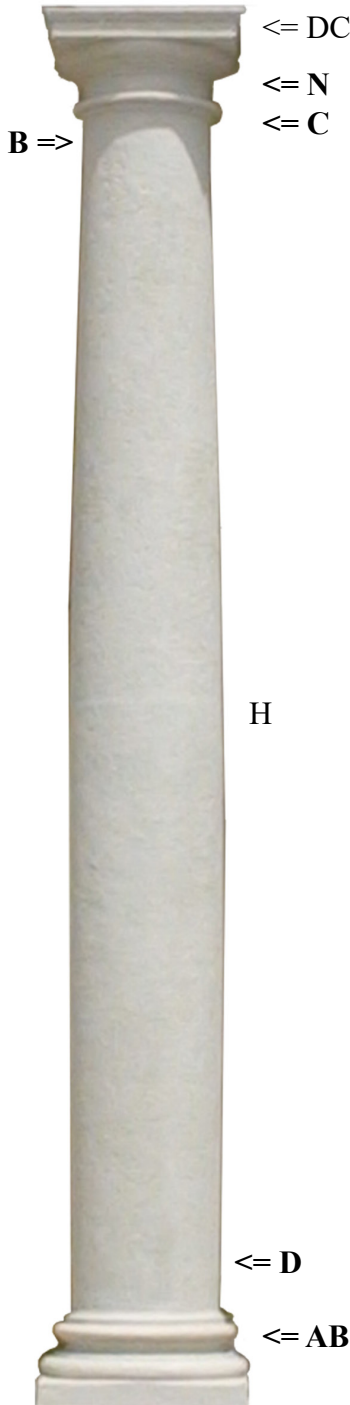




Doric Tapered Smooth Shaft

Custom Form: Hardwood or Composite



DC) Doric Capital
See Page 2



N= Neck
B = Shaft Top Diameter
or Circumference

C = Astragal
Same as Shaft Bottom

Enthasis Tapered
Taper Stops 2/3rds down shaft
or Specified Distance

D = Bottom of Shaft
Diameter or Circumference

H) Total Height All Parts

AB) Attic Base - See Page 3

Shaft Material: Input # _____

- 1) Pine 2) Douglas Fir
- 3) Western Red Cedar
- 4) White Oak
- Non Wood
- 5) ArchPolymer™
- 6) FRP-PolyComp™

How many Whole Columns _____

How many Split Columns _____

Split for Inside Corner # _____

Split for Wall Wrap # _____

Split for Outside Corner # _____

Split for Engaged Pilaster
What Percentage Cut _____ %

Split in Half _____



Split for inside Corner



Split for Wall Wrap



Split for Wall Wrap



Engaged

Name _____

Date _____

* All specifications are subject to Manufacturing tolerances 1/8"



Imperial Productions®

1-800-399-7585

Imperial Productions & Distribution Inc

email sales@imperialproductions.com copyright 2016 MRDCI All Rights Reserved



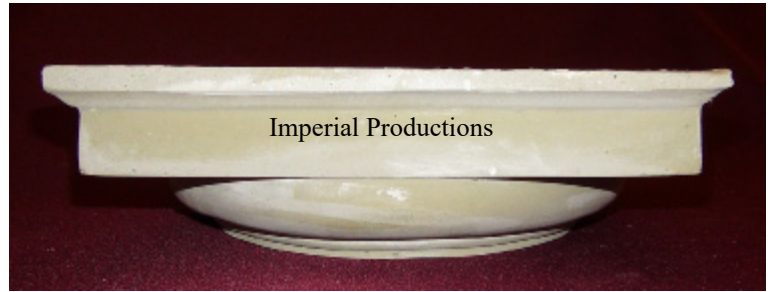
Doric Capital - Custom Form

Hardwood or Composite

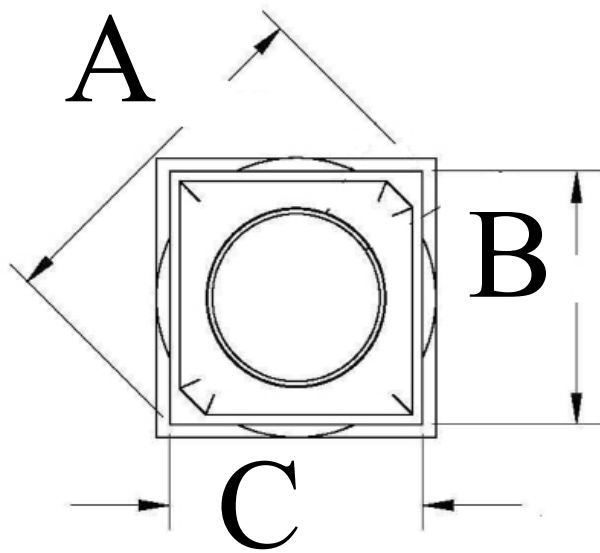
D=Top Square Height ----->

E=Mid Square Height ----->

F=Ovolo Round Height ----->



G=Ovolo Diameter Outside



A = _____

B = _____

C = _____

D = _____

E = _____

F = _____

G = _____

Materials: Input #

-
- 1) Pine
 - 2) Douglas Fir
 - 3) Western Red Cedar
 - 4) White Oak

Hollow Non Wood

- 5) ArchPolymer™
- 6) FRP-PolyComp™

Name _____

Date _____

* All specifications are subject to Manufacturing tolerances 1/8"



Imperial Productions® 1-800-399-7585

Imperial Productions & Distribution Inc

email sales@imperialproductions.com copyright 2016 MRDCI All Rights Reserved

OCT-24

IP Attic Base Custom Form: Hardwood or Composite



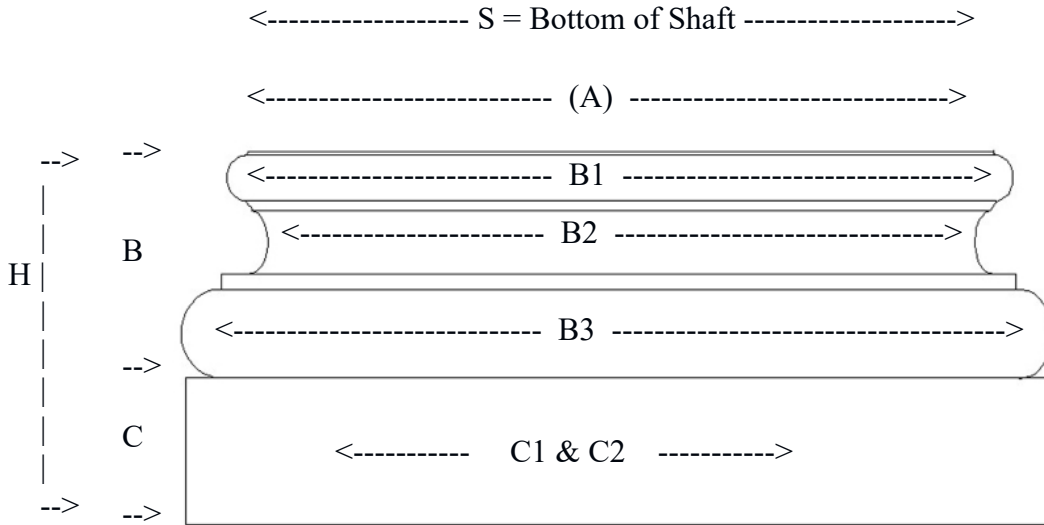
Attic bases are made from 2 Parts
 Top Rings Torus
 Bottom Square Plinth

Materials:
 Input # _____

- 1) Pine
- 2) Douglas Fir
- 3) Western Red Cedar
- 4) White Oak

Hollow Non Wood

- 5) ArchPolymer™
- 6) FRP-PolyComp™



S) Column Bottom of Shaft Diameter _____

A) Top Flat Diameter where Shaft sits on _____

Round Section Torus

B) Total Height: _____

(B1) Height _____ Diameter _____

(B2) Height _____ Diameter _____

(B3) Height _____ Diameter _____

Square Plinth C) Height _____

C1) width _____ C2) Depth _____

H) Total Height of all parts _____

Quantity: _____
 Whole

Quantity: _____
 Split for 1/2 column

Name _____

Date _____

* All specifications are subject to Manufacturing tolerances 1/8"



Imperial Productions® 1-800-399-7585

Imperial Productions & Distribution Inc

email sales@imperialproductions.com copyright 2016 MRDCI All Rights Reserved

OCT-24



REQUEST FOR COLUMN QUOTE

Download and Auto Fill

Name / Company _____

Contact Name: _____

Phone # _____ Email: _____

Bill To Address

ShipTo Address

ZIP/PC _____

ZIP/PC _____

Product Code _____

- 1) Residential
- 2) Commercial
- 3) Commercial Load Bay

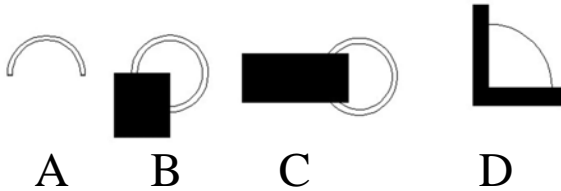
of Columns Whole _____

Fill in _____

Split for Wrap (A) _____

Notes: _____

Split for Engaged (A) _____



Split B _____

Split C _____

Split D _____

Date: _____



Imperial Productions®

1-800-399-7585

Imperial Productions & Distribution Inc.

email sales@imperialproductions.com copyright 2016 MRDCI All Rights Reserved